

YKK 系列 高压 三相 异步 电动机

YKK SERIES HIGH-VOLTAGE THREE PHASE INDUCTION MOTOR

机座号 355~630 (6kV)
450~630 (10kV)

功率 185~2240kW (6kV)
185~1800kW (10kV)

工作制 S1

绝缘等级 F

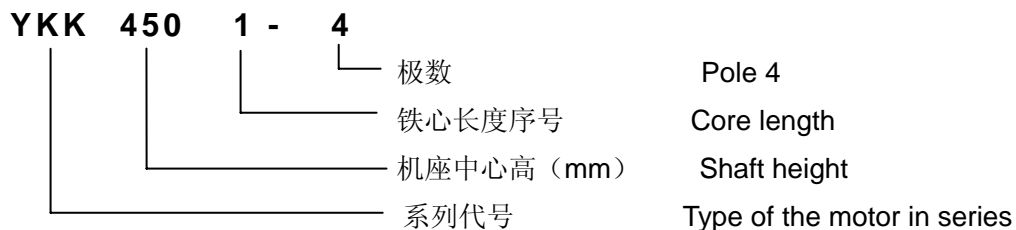
适用于: 驱动各种通用机械, 如通风机、压缩机、水泵、破碎机、切削机床、运输机械及其它机械设备等, 并可供矿山、机械工业、石油化工工业、发电厂等各种工矿企业作原动机用。

Applications: General purpose including compressor, water pump, crack machine, cut machine, transportation machine and other equipments. It is also used as the primitive drive for the mine mechanical industry, petroleum & chemistry industry, power plant and so on.

特点: 电机造型采用钢板焊接成箱式结构, 重量轻、刚度好; 顶部带封闭式空-空冷却器, 便于维修; 定子采用压装结构, 定子绕组 F 级绝缘、VPI 浸漆, 绝缘性能优良可靠、机械强度好、防潮能力强; 基本形式为 IP44 防护等级, 可按要求制成 IP54 等级。

Features: the motor has the box-type construction, which was made up of steel plate welded with each other, lightweight and good stiffness. On top of the motor is the air- air cooler, convenient to maintenance and replacement. The stator adopts the press construction; the winding with class F insulation and VPI impregnating, which ensure the reliable of the insulation, the mechanical stress and the capable of resistant humidity. The basical protection class is IP44; IP54 motor can be supplied according to requirement.

电动机型号说明 Designations of types



性能数据 Performance Data

6KV 50Hz

型 号 Type	额定 功率 kW	同步 转速 r/min	满载时 Full Load			最大转矩 额定转矩	堵转转矩 额定转矩	堵转电流 额定电流	噪声 Sound Power dB (A)
			电流 Current A	效 率 Eff. %	功率因数 Power Factor cos Φ	Breakdown Torque Rated Torque	Locked Rotor Torque Rated Torque	Locked Rotor Current Rated Current	
YKK355 1-4	185	1500	22.6	92.8	0.85	1.8	0.8	6.5	106
YKK355 2-4	200		24.4	92.9					
YKK355 3-4	220	1500	26.8	93.0	0.86	1.8	0.8	6.5	106
YKK355 4-4	250		30.4	93.1					108

性能数据 Performance Data

6KV 50Hz

型 号 Type	额定 功率 kW	同步 转速 r/min	满载时 Full Load			最大转矩	堵转转矩	堵转电流	噪声
			电 流 Current A	效 率 Eff. %	功率因数 Power Factor cosΦ	额定转矩	额定转矩	额定电流	Sound
						Rated Torque	Rated Torque	Rated Current	Power dB(A)
YKK355 5-6	185	1000	23.5	92.4	0.82	1.8	0.8	6.0	102
YKK355 6-6	200		25.3	92.6					
YKK400 2-4	280	1500	33.6	93.2	0.86	1.8	0.8	6.5	108
YKK400 3-4	315		37.8	93.3					
YKK400 4-4	355	1500	42.5	93.5	0.86	1.8	0.8	6.5	108
YKK400 5-4	400		47.8	93.7					
YKK400 6-4	450		53.6	93.9					
YKK400 1-6	185	1000	23.5	92.4	0.82	1.8	0.8	6.0	102
YKK400 2-6	200		25.3	92.6					
YKK400 3-6	220	1000	27.8	92.8	0.82	1.8	0.8	6.0	102
YKK400 4-6	250		31.5	93.0					105
YKK400 5-6	280	1000	35.2	93.3	0.82	1.8	0.8	6.0	105
YKK400 6-6	315		39.5	93.5					
YKK400 4-8	185	750	24.7	92.5	0.78	1.8	0.8	5.5	99
YKK400 5-8	200		26.6	92.7					
YKK400 6-8	220		29.2	92.9					
YKK450 2-4	500	1500	59.5	94.0	0.86	1.8	0.8	6.5	108
YKK450 3-4	560		66.5	94.2					111
YKK450 4-4	630	1500	74.7	94.4	0.86	1.8	0.8	6.5	111
YKK450 5-4	710		84.0	94.6					
YKK450 2-6	355	1000	43.9	93.7	0.83	1.8	0.8	6.0	105
YKK450 3-6	400		49.4	93.8					
YKK450 4-6	450	1000	55.4	94.1	0.83	1.8	0.8	6.0	105
YKK450 5-6	500		61.5	94.3					
YKK450 2-8	250	750	32.7	93.0	0.79	1.8	0.8	5.5	102
YKK450 3-8	280		36.6	93.2					
YKK450 4-8	315	750	41.1	93.4	0.79	1.8	0.8	5.5	102
YKK450 5-8	355		46.2	93.5					
YKK450 1-10	185	600	25.9	91.7	0.75	1.8	0.8	5.5	99
YKK450 2-10	200		27.9	91.9					
YKK450 3-10	220		30.6	92.1					
YKK450 4-10	250	600	34.8	92.3	0.75	1.8	0.8	5.5	102
YKK450 5-10	280		38.8	92.5					
YKK450 4-12	185	500	27.7	91.8	0.70	1.8	0.8	5.5	99
YKK450 5-12	200		29.9	92.0					

性能数据 Performance Data

6KV 50Hz

型 号 Type	额定 功率 kW	同步 转速 r/min	满载时 Full Load			最大转矩 额定转矩 Breakdown Torque Rated Torque	堵转转矩 额定转矩 Locked Rotor Torque Rated Torque	堵转电流 额定电流 Locked Rotor Current Rated Current	噪声 Sound Power dB(A)
			电 流 Current A	效 率 Eff. %	功率因数 Power Factor cos Φ				
YKK500 1-4	800	1500	93.9	94.8	0.87	1.8	0.7	6.5	111
YKK500 2-4	900		105	94.9					
YKK500 3-4	1000	1500	116	95.0	0.87	1.8	0.7	6.5	111
YKK500 4-4	1120		130	95.1					113
YKK500 1-6	560	1000	68.0	94.4	0.84	1.8	0.7	6.0	108
YKK500 2-6	630		76.4	94.5					
YKK500 3-6	710	1000	85.8	94.8	0.84	1.8	0.7	6.0	108
YKK500 4-6	800		96.6	94.9					
YKK500 1-8	400	750	51.3	93.7	0.80	1.8	0.8	5.5	102
YKK500 2-8	450		57.7	93.8					
YKK500 3-8	500	750	63.8	94.2	0.80	1.8	0.8	5.5	102
YKK500 4-8	560		71.4	94.4					105
YKK500 1-10	315	600	43.0	92.8	0.76	1.8	0.8	5.5	102
YKK500 2-10	355		48.3	93.0					
YKK500 3-10	400	600	54.3	93.3	0.76	1.8	0.8	5.5	102
YKK500 4-10	450		61.0	93.4					
YKK500 1-12	220	500	31.9	92.2	0.72	1.8	0.8	5.5	99
YKK500 2-12	250		36.1	92.5					102
YKK500 3-12	280	500	40.4	92.7	0.72	1.8	0.8	5.5	102
YKK500 4-12	315		45.4	92.8					
YKK560 1-4	1250	1500	144	95.2	0.88	1.8	0.6	6.5	113
YKK560 2-4	1400		161	95.3					
YKK560 3-4	1600		183	95.4					
YKK560 1-6	900	1000	107	95.0	0.85	1.8	0.7	6.5	108
YKK560 2-6	1000		119	95.1					
YKK560 3-6	1120		133	95.2					
YKK560 1-8	630	750	78.2	94.5	0.82	1.8	0.7	6.0	110
YKK560 2-8	710		80.0	94.6					105
YKK560 3-8	800		99.1	94.7					
YKK560 1-10	500	600	65.9	93.6	0.78	1.8	0.7	6.0	102
YKK560 2-10	560	600	73.7	93.7	0.80	1.8	0.7	6.0	105
YKK560 3-10	630		82.8	93.8					
YKK560 4-10	710		93.1	94.0					
YKK560 1-12	355	500	49.6	93.0	0.74	1.8	0.7	6.0	102
YKK560 2-12	400	500	55.7	93.3	0.75	1.8	0.7	6.0	102
YKK560 3-12	450		62.6	93.4					
YKK560 4-12	500		69.4	93.7					

性能数据 Performance Data

6KV 50Hz

型 号 Type	额定 功率 kW	同步 转速 r/min	满载时 Full Load			最大转矩 额定转矩 Breakdown Torque Rated Torque	堵转转矩 额定转矩 Locked Rotor Torque Rated Torque	堵转电流 额定电流 Locked Rotor Current Rated Current	噪声 Sound Power dB(A)
			电 流 Current A	效 率 Eff. %	功率因数 Power Factor cos Φ				
YKK630 1-4	1800	1500	206	95.5	0.88	1.8	0.6	6.5	113
YKK630 2-4	2000		229	95.6					
YKK630 3-4	2240		256	95.7					
YKK630 1-6	1250	1000	147	95.3	0.86	1.8	0.7	6.5	110
YKK630 2-6	1400		164	95.4					
YKK630 3-6	1600		187	95.5					
YKK630 1-8	900	750	109	94.8	0.86	1.8	0.7	6.0	105
YKK630 2-8	1000		121	94.9					
YKK630 3-8	1120	750	135	95.0	0.84	1.8	0.7	6.0	107
YKK630 4-8	1250		151	95.1					
YKK630 1-10	800	600	102	94.2	0.80	1.8	0.7	6.0	105
YKK630 2-10	900		115	94.3					
YKK630 3-10	1000	600	127	94.4	0.80	1.8	0.7	6.0	105
YKK630 4-10	1120		142	94.6					107
YKK630 1-12	560	500	75.6	93.8	0.76	1.8	0.7	6.0	105
YKK630 2-12	630		84.9	93.9					
YKK630 3-12	710	500	95.6	94.0	0.76	1.8	0.7	6.0	105
YKK630 4-12	800		108	94.2					

性能数据 Performance Data

10KV 50Hz

型 号 Type	额定 功率 kW	同步 转速 r/min	满载时 Full Load			最大转矩 额定转矩	堵转转矩 额定转矩	堵转电流 额定电流	噪声 Sound
			电 流 Current A	效 率 Eff. %	功率因数 Power Factor cos Φ	Breakdown Torque	Locked Rotor Torque	Locked Rotor Current	Power
						Rated Torque	Rated Torque	Rated Current	dB(A)
YKK450S1-4	185	1500	13.7	92.0	0.85	1.8	0.7	7.0	104
YKK450S2-4	200		14.7	92.3					
YKK450S3-4	220	1500	16.2	92.4	0.85	1.8	0.7	7.0	104
YKK450S4-4	250		18.3	92.6					
YKK450 1-4	280	1500	20.3	92.7	0.86	1.8	0.7	7.0	104
YKK450 2-4	315		22.7	93.2					106
YKK450 3-4	355	1500	25.5	93.5	0.86	1.8	0.7	7.0	106
YKK450 4-4	400		28.7	93.6					
YKK450 5-4	450		32.2	93.8					
YKK450S1-6	185	1000	14.2	92.0	0.82	1.8	0.7	6.0	101
YKK450S2-6	200		15.3	92.1					
YKK450S3-6	220		16.8	92.3					

性能数据 Performance Data

10KV 50Hz

型 号 Type	额定 功率 kW	同步 转速 r/min	满载时 Full Load			最大转矩 额定转矩 Breakdown Torque Rated Torque	堵转转矩 额定转矩 Locked Rotor Torque Rated Torque	堵转电流 额定电流 Locked Rotor Current Rated Current	噪声 Sound Power dB(A)
			电 流 Current A	效 率 Eff. %	功率因数 Power Factor cos Φ				
YKK450 1-6	250	1000	19.1	92.4	0.82	1.8	0.7	6.0	101
YKK450 2-6	280		21.0	92.7	0.83				103
YKK450 3-6	315	1000	23.6	92.8	0.83	1.8	0.7	6.0	103
YKK450 4-6	355		26.5	93.1					
YKK450 1-8	185	750	15.2	92.2	0.76	1.8	0.7	6.0	97
YKK450 2-8	200		16.4	92.4					
YKK450 3-8	220		18.1	92.5					
YKK500 1-4	500	1500	35.3	94.0	0.87	1.8	0.7	7.0	106
YKK500 2-4	560		39.5	94.2					108
YKK500 3-4	630	1500	44.3	94.4	0.87	1.8	0.7	7.0	108
YKK500 4-4	710		49.6	95.0					
YKK500 5-4	800		55.8	95.1					
YKK500 1-6	400	1000	29.8	93.3	0.83	1.8	0.7	6.0	103
YKK500 2-6	450		33.5	93.5					
YKK500 3-6	500	1000	37.0	93.9	0.83	1.8	0.7	6.0	106
YKK500 4-6	560		40.9	94.1	0.84				97
YKK500 1-8	250	750	20.2	92.6	0.77	1.8	0.7	6.0	97
YKK500 2-8	280		22.6	92.7					
YKK500 3-8	315	750	25.5	92.8	0.77	1.8	0.7	6.0	99
YKK500 4-8	355		28.6	93.1					
YKK500 5-8	400		31.8	93.2	0.78				
YKK500 1-10	185	600	15.9	91.9	0.73	1.8	0.7	5.5	97
YKK500 2-10	200		17.2	92.0					
YKK500 3-10	220	600	18.6	92.1	0.74	1.8	0.7	5.5	97
YKK500 4-10	250		21.2	92.2					
YKK500 5-10	280	600	23.6	92.4	0.74	1.8	0.7	5.5	97
YKK500 6-10	315		26.5	92.6					99
YKK500 1-12	185	500	15.9	91.8	0.73	1.8	0.7	5.5	97
YKK500 2-12	200		17.2	91.9					
YKK500 3-12	220		18.9	92.0					
YKK560 1-4	900	1500	62.0	95.2	0.88	1.8	0.7	7.0	108
YKK560 2-4	1000		68.8	95.3					
YKK560 3-4	1120		77.0	95.4					109

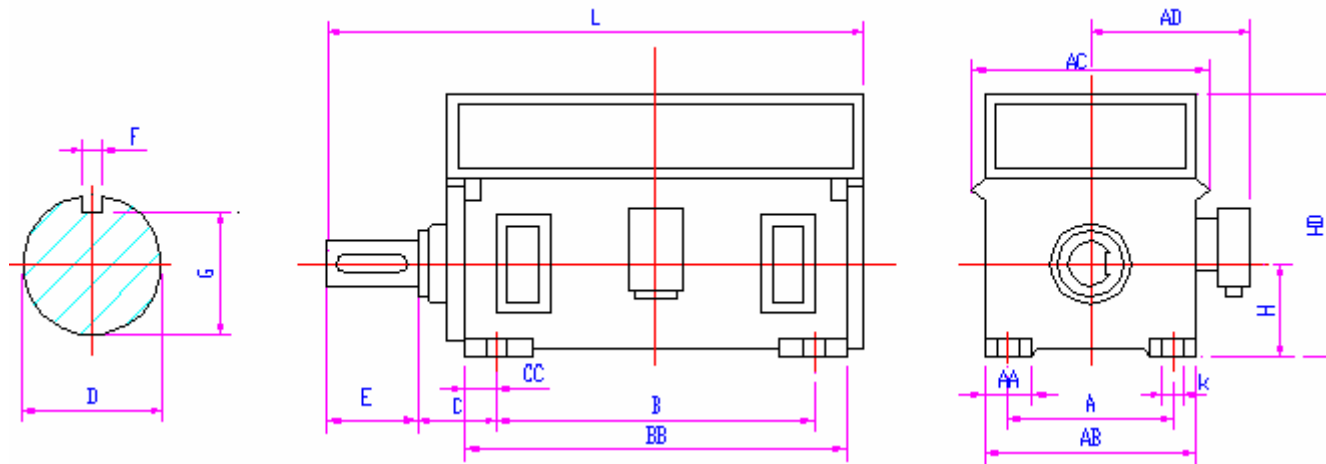
性能数据 Performance Data

10KV 50Hz

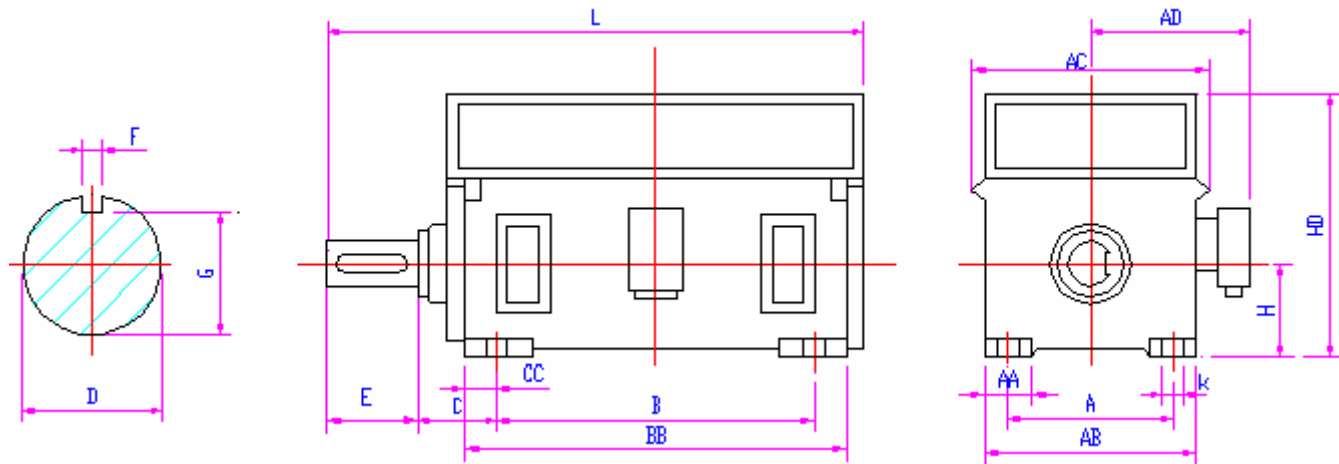
型 号 Type	额定 功率 kW	同步 转速 r/min	满载时 Full Load			最大转矩 额定转矩 Breakdown Torque Rated Torque	堵转转矩 额定转矩 Locked Rotor Torque Rated Torque	堵转电流 额定电流 Locked Rotor Current Rated Current	噪 声 Sound Power dB(A)
			电 流 Current A	效 率 Eff. %	功率因数 Power Factor cos Φ				
YKK560 1-6	630	1000	45.9	94.4	0.84	1.8	0.7	6.0	106
YKK560 2-6	710		51.6	94.6					
YKK560 3-6	800		58.1	94.7					
YKK560 1-8	450	750	35.7	93.4	0.78	1.8	0.7	6.0	99
YKK560 2-8	500		39.0	93.8	0.79				
YKK560 3-8	560	750	43.6	93.9	0.79	1.8	0.7	6.0	101
YKK560 4-8	630		46.4	94.4	0.83				
YKK560 1-10	355	600	29.4	92.8	0.75	1.8	0.7	6.0	99
YKK560 2-10	400		33.1	93.0					
YKK560 3-10	450	600	36.2	93.2	0.77	1.8	0.7	6.0	99
YKK560 4-10	500		40.1	93.4					
YKK560 5-10	560		44.3	93.5	0.78				101
YKK560 1-12	250	500	21.5	92.0	0.73	1.8	0.7	6.0	99
YKK560 2-12	280		24.0	92.1					
YKK560 3-12	315	500	27.0	92.3	0.73	1.8	0.7	6.0	99
YKK560 4-12	355		30.4	92.5					
YKK560 5-12	400		34.1	92.7					
YKK630 1-4	1250	1500	84.9	95.5	0.89	1.8	0.6	7.0	109
YKK630 2-4	1400		94.9	95.7					
YKK630 3-4	1600	1500	108	95.8	0.89	1.8	0.6	7.0	109
YKK630 4-4	1800		122	95.9					
YKK630 1-6	900	1000	64.4	94.9	0.85	1.8	0.6	6.0	106
YKK630 2-6	1000		71.4	95.1					
YKK630 3-6	1120	1000	79.8	95.3	0.85	1.8	0.6	6.0	108
YKK630 4-6	1250		88.0	95.4	0.86				
YKK630 1-8	710	750	52.8	94.6	0.82	1.8	0.7	6.0	101
YKK630 2-8	800		59.5	94.7					
YKK630 3-8	900	750	66.8	94.8	0.82	1.8	0.7	6.0	101
YKK630 4-8	1000		73.2	95.0	0.83				
YKK630 1-10	630	600	49.8	93.7	0.78	1.8	0.7	6.0	101
YKK630 2-10	710		56.0	93.9					
YKK630 3-10	800	600	61.2	94.3	0.80	1.8	0.7	6.0	101
YKK630 4-10	900		68.7	94.5					
YKK630 1-12	450	500	38.3	92.9	0.73	1.8	0.7	6.0	99
YKK630 2-12	500		42.4	93.2					
YKK630 3-12	560	500	46.7	93.5	0.74	1.8	0.7	6.0	101
YKK630 4-12	630		52.5	93.7					

6kV 电机外形及安装尺寸 Dimensions

mm



机座 Frame	极数 poles	安装尺寸 Mounting Dimension									外形尺寸 Overall Dimension							
		A	B	C	D	E	F	G	H	K	AA	AB	AC	BB	CC	HD	AD	L
355	4. 6	630±1. 4	900±1. 4	315±4	100 ^{+0. 035 -0. 013}	210±0. 57	28 ^{0 -0. 052}	90 ^{0 -0. 2}	355 ^{0 -1. 0}	28 ^{+0. 52 0}	120	745	1120	1260	210	1500	1000	2200
400	4. 6. 8	710±1. 75	1000±1. 75	335±4	110 ^{+0. 035 -0. 013}	210±0. 57	28 ^{0 -0. 052}	100 ^{0 -0. 2}	400 ^{0 -1. 0}	35 ^{+0. 62 0}	120	845	1260	1360	220	1700	1050	2400
450	4	800±1. 75	1120±1. 75	355±4	120 ^{+0. 035 -0. 013}	210±0. 57	32 ^{0 -0. 062}	109 ^{0 -0. 2}	450 ^{0 -1. 0}	35 ^{+0. 62 0}	130	935	1420	1490	240	1900	1100	2600
	6-12				130 ^{+0. 040 -0. 015}			250±0. 57										
500	4	900±2. 1	1250±2. 1	475±4	130 ^{+0. 040 -0. 015}	250±0. 57	32 ^{0 -0. 062}	119 ^{0 -0. 2}	500 ^{0 -1. 0}	42 ^{+0. 62 0}	150	1050	1600	1750	250	2200	1150	2900
	6-12				140 ^{+0. 040 -0. 015}			36 ^{0 -0. 062}										
560	4	1000±2. 1	1400±2. 1	500±4	150 ^{+0. 035 -0. 013}	250±0. 57	36 ^{0 -0. 062}	138 ^{0 -0. 3}	560 ^{0 -1. 0}	42 ^{+0. 62 0}	160	1200	1800	2000	300	2400	1250	3200
	6-12				160 ^{+0. 040 -0. 015}			300±0. 65										
630	4	1120±2. 1	1600±2. 1	530±4	170 ^{+0. 040 -0. 015}	300±0. 65	40 ^{0 -0. 062}	157 ^{0 -0. 3}	630 ^{0 -1. 0}	48 ^{+0. 62 0}	170	1400	2000	2200	300	2700	1300	3500
	6-12				180 ^{+0. 040 -0. 015}			45 ^{0 -0. 062}										



型 号 Type	安装尺寸 Mounting Dimension									外形尺寸 Overall Dimension							
	A	B	C	D	E	F	G	H	K	AA	AB	AC	BB	CC	HD	AD	L
YKK450-4	800±1.75	1120±1.75	355±4	110 ^{+0.035} _{-0.013}	210±0.57	28 ⁰ _{-0.052}	100 ⁰ _{-0.2}	450 ⁰ _{-1.0}	35 ^{+0.62} ₀	200	980	1300	1670	249	1670	1050	2360
YKK450 - 6~12																	
YKK500-4	900±2.1	1250±2.1	475±4	120 ^{+0.035} _{-0.013}	210±0.57	32 ⁰ _{-0.062}	109 ⁰ _{-0.2}	500 ⁰ _{-1.0}	42 ^{+0.62} ₀	140	1040	1260	2050	350	2060	965	3000
YKK500-6~12				130 ^{+0.040} _{-0.015}			119 ⁰ _{-0.3}										
YKK560-4	1000±2.1	1400±2.1	500±4	150 ^{+0.035} _{-0.013}	250±0.57	36 ⁰ _{-0.062}	138 ⁰ _{-0.2}	560 ⁰ _{-1.0}	42 ^{+0.62} ₀	150	1200	1600	2500	370	2400	1100	3300
YKK560-6~12				160 ^{+0.040} _{-0.015}			147 ⁰ _{-0.3}										
YKK630 - 4	1120±2.1	1600±2.1	530±4	170 ^{+0.040} _{-0.015}	300±0.65	40 ⁰ _{-0.062}	157 ⁰ _{-0.2}	630 ⁰ _{-1.0}	48 ^{+0.62} ₀	160	1400	1800	2700	400	2700	1200	3600
YKK630-6~12				180 ^{+0.040} _{-0.015}			165 ⁰ _{-0.3}										

** 所有数据仅供参考，实际情况以实物为准 ALL DATA SUBJECT TO CHANGE WITHOUT NOTICE, USE ONLY CERTIFIED DATA FOR CONSTRUCTION PURCHASES.